

# Emergency Services - Your Estate

Our real estate team specialises in working for the public sector, based in our offices in London, Birmingham, Chorley, Leeds and Winchester. We have a proven track record in securing results for our public sector clients, combined with a wealth of experience, expertise and capacity to advise and support on all aspects of your estate.

## What makes Capsticks different?

We recognise that your estate plays a key role in your day to day activities. It's vital for your organisation to keep ahead of the curve in developing innovative solutions to meet your estates challenges. We have a breadth of experience acting for Ambulance Trusts, Police and Fire Services, NHS bodies and other public and third sector organisations as well as social housing Registered Providers across the country. Because of this, we're uniquely placed to provide advice around income generation and efficiency savings that can help deliver real value to your blue light estate.

We're also seeing a movement towards far more extensive joint working and collaboration between emergency services, both in the form of co-located developments such as ambulance community response posts within fire stations and combined blue light facilities and headquarters, as well as efficiency savings projects including flexible shared space and shared back office functions. Our work to date has been at the forefront of this trend, and we can utilise the "lessons learned" from these projects to give your organisation a unique insight and advantage in your own estates negotiations.

## How can we help you?

We can help you across your entire range of real estate issues including:

- Property acquisitions and disposals
- Joint venture projects and collaboration
- Income generation projects
- Construction contracts, warranties, bonds and guarantees
- Development projects and property finance

Capsticks  
www.capsticks.com  
 @capstickslp

London  
1 St George's Road,  
London SW19 4DR  
T +44 (0)20 8780 2211  
F +44 (0)20 8780 1141  
DX 300118 - Wimbledon Central

Birmingham  
35 Newhall Street,  
Birmingham B3 3PU  
T +44 (0)121 230 1500  
F +44 (0)121 230 1515  
DX 13003 - Birmingham

Leeds  
Toronto Square, Toronto Street,  
Leeds LS1 2HJ  
T +44 (0)113 322 5560  
F +44 (0)113 242 2722  
DX 713112 - Leeds Park Square

Winchester  
Staple House, Staple Gardens,  
Winchester, SO23 8SR  
T +44 (0)1962 678 300  
F +44 (0)1962 678 311  
DX 2532 - Winchester

- Structuring property developments
- Health and safety
- Dealing with disputes concerning residential or commercial property
- Sales and leasebacks
- Estate management and occupational regularisation
- Landlord and tenant law
- Planning and environmental
- PFI and PPP projects
- Leases and licences
- Construction disputes and litigation

## How do we deliver your estates work?

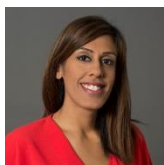
We pride ourselves on establishing strong and long lasting relationships with our clients. That means you'll have the certainty and reassurance of a dedicated Capsticks team handpicked for you. We make it our business to get to know your team, how you prefer to work, what matters to your organisation and the key priorities for your estate, in order to deliver the results you need.

Last but by no means least, we know how important it is for you to obtain value for money from your legal advice. Our decades of experience in working for public sector organisations with their own ever increasing costs pressures means that we're constantly making our own internal processes, structures and overheads more cost efficient, in order to pass on those cost efficiencies to our clients. We offer extremely competitive pricing arrangements including a range of innovative pricing and fixed fee solutions and would be delighted to discuss these with you in more detail.

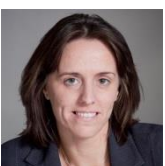
*For more information please contact:*



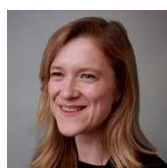
**MARK PAGET SKELIN**  
**Partner**  
 020 8780 4861  
[mark.pagetskelin@capsticks.com](mailto:mark.pagetskelin@capsticks.com)



**SUNITA RAJA**  
**Associate**  
 0208 780 6973  
[Sunita.raja@capsticks.com](mailto:Sunita.raja@capsticks.com)



**TRACY GILES**  
**Associate**  
 0121 230 1507  
[Tracy.giles@capsticks.com](mailto:Tracy.giles@capsticks.com)



**ABI CONDRY**  
**Partner**  
 020 8780 4719  
[abi.condry@capsticks.com](mailto:abi.condry@capsticks.com)