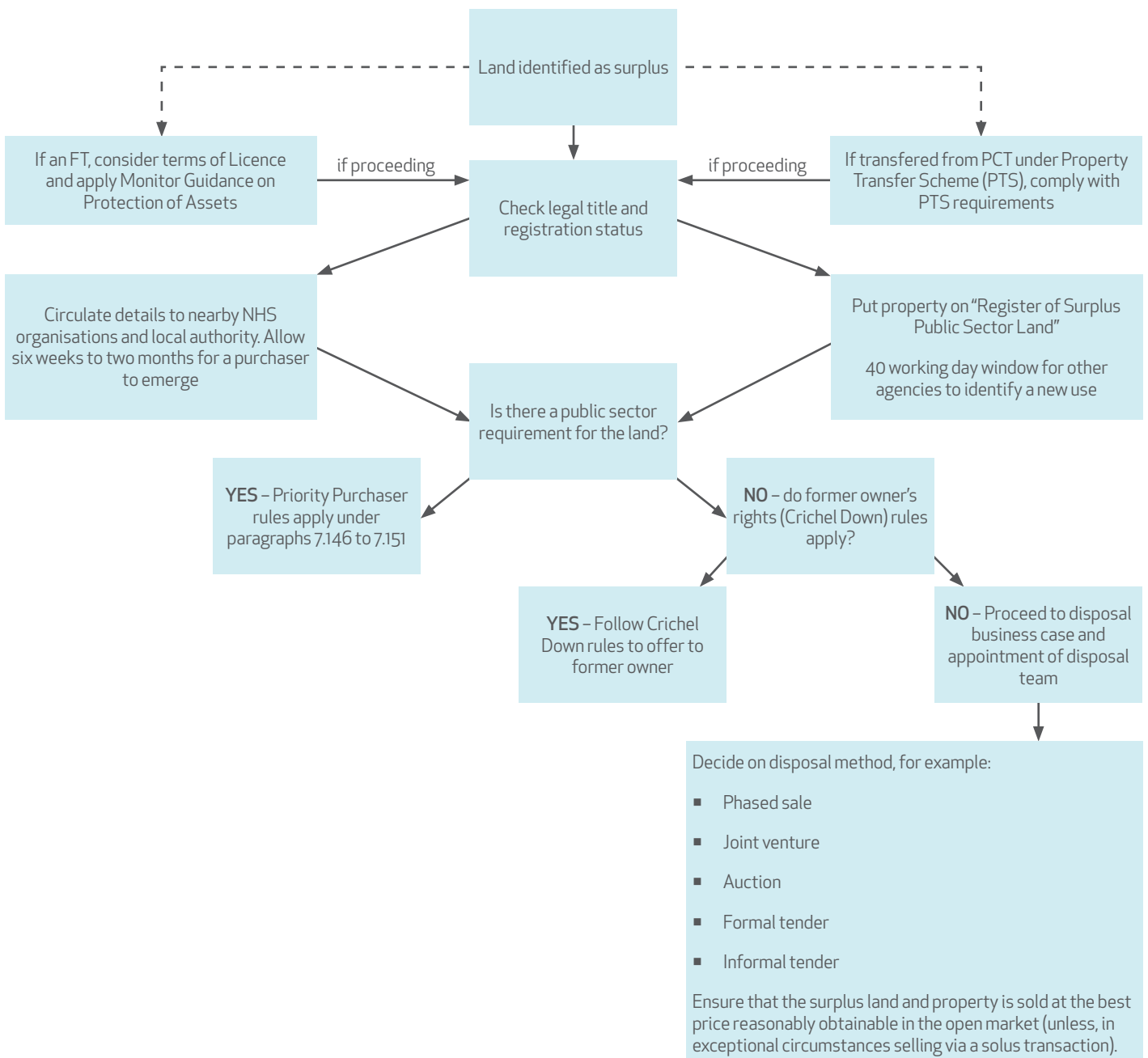


# Disposals of Surplus NHS Land and Property: An Estatecode Reminder

Whether your organisation is required to follow Estatecode or does so only as a matter of best practice, it will need to be aware of the detailed requirements in Chapter 7 before proceeding with any disposal. With that in mind, we have set out the initial procedure in flow-chart form:



## How Capsticks can help with your disposals of surplus estate

At Capsticks we have the largest dedicated healthcare property legal team in the country, with lawyers who have advised NHS bodies on site disposals ranging from the simplest to the most complex.

The estates team at Capsticks is ready to help you with your disposal project from start to finish whichever route you are taking. Our advice and support is guided by the need not only to get things done, but to get them done properly, on time and within budget and to maximise value for the public sector.

We have acted on some major land sales over recent years across all parts of the country, which have included complex coverage and clawback provisions which have secured additional value for our clients.

## Get in touch

If you would like to discuss your disposal plans with us and see how we can help, please contact one of our team:



LISA GEARY  
**Partner**  
0113 322 5561  
lisa.geary@capsticks.com




MARK PAGET SKELIN  
**Partner**  
020 8780 4861  
mark.pagetskelin@capsticks.com



LISA ROBOTHAM  
**Partner**  
0121 230 1511  
lisa.robotham@capsticks.com

### Capsticks

www.capsticks.com

 @capstickslp

#### London

1 St George's Road,  
London SW19 4DR  
T +44 (0)20 8780 2211  
F +44 (0)20 8780 1141  
DX 300118 - Wimbledon Central

#### Birmingham

35 Newhall Street,  
Birmingham B3 3PU  
T +44 (0)121 230 1500  
F +44 (0)121 230 1515  
DX 13003 - Birmingham

#### Leeds

Toronto Square, Toronto Street,  
Leeds LS1 2HJ  
T +44 (0)113 322 5560  
F +44 (0)113 242 2722  
DX 713112 - Leeds Park Square

#### Winchester

Staple House, Staple Gardens,  
Winchester, SO23 8SR  
T +44 (0)1962 678 300  
F +44 (0)1962 678 311  
DX 2532 - Winchester