

# Primary Care Networks

## Are you ready?

- Have you discussed the structure of your Primary Care Network?
- What collaborative options are available?
- Have you confirmed the Accountable Clinical Director?
- Have you decided how the MDTs will be employed?
- Have you completed the Network Agreement?

A key part of the NHS long-term plan, Primary Care Networks will bring general practices together to work at scale. GP practices are expected to come together in geographical networks covering populations of approximately 30–50,000 patients, providing better collaboration between practices and others in the local health and social care system.

But there is much to be decided...

Between now and 30 June, Networks will need to complete the Network Agreement Schedules so that they are tailored to your specific circumstances.

Go live is 1 July 2019.

## How can we help you?

As practices continue to come together, the role of the PCN will develop. Already we are seeing that there are a variety of models across the country. There are many things to consider including its form, the allocation of risk and liability and ultimately its purpose. We offer a range of services including training to help you explore the best option for your Network.

### 1. Network Agreements

With much of the drafting needing to be completed, our service is bespoke. We will tailor the key Schedules to the Network Agreement in line with your Network requirements. These Schedules include the details of your governance arrangements; funding; service delivery model and workforce arrangements, so it is essential they reflect the requirements of your Network. We are happy to discuss the issues which are of particular concern and provide practical advice as to the options available.

Our aim is to make the process as uncomplicated as possible.

- We will provide you with a questionnaire which will ask you to supply us with as much information as possible about your Network.
- We will then use that information to draft bespoke schedules to the Network Agreement which we will supply with a succinct report.
- As you review the draft, we will be on hand to provide assistance as and when required to ensure that your Network Agreement can be completed and signed as soon as possible.

## 2. Workshops on possible network models

There are several different network models available to PCNs which will affect issues such as practice relations, funding, operational management and staffing. Each practice will need to understand the administrative, legal and financial implications each model has before they can make an informed decision on how to proceed.

We understand the importance of choosing the right model for your Network and are able to provide an independent perspective on the available options to facilitate your local discussions. We can provide bespoke workshops which evaluate the various models and provide you with clear, simple solutions to the issues you face.

## 3. Workforce and HR Planning

As PCNs attempt to meet patients' needs by establishing the right workforce in line with new frameworks the challenges that can arise as a result of collaborative working should not be underestimated. Our experienced team of HR practitioners are ideally placed to support your collaboration requirements ensuring that your Network adopts an arrangement that works best for you. We will develop and provide you with all the necessary tools to ensure your Network runs smoothly including a Network Workforce Plan, Network Contracts of Employment and a Network Protocol to ensure staff can work across a range of practices.

Our practitioners are all senior professionals from health and social care backgrounds and hold both academic and professional qualifications in their fields, placing them in the ideal position to support Networks at this critical and exciting time.

## 4. Data sharing and data processing agreements

With the GDPR now fully ingrained, statutory obligations on those that handle personal data are more stringent than ever. Data sharing and processing agreements will be an essential component of PCNs in order to allow all parts of the Network to access necessary data. In order to facilitate this, PCNs will have access to a national template data sharing agreement but will need to ensure they fully understand the responsibilities and risks associated with handling personal data.

As experts on all aspects of the law relating to data subject rights – including handling complex requests - we can undertake health-checks on your information-handling policies and provide training to ensure your agreements are compliant.

*For more information about how we can help you, please contact:*



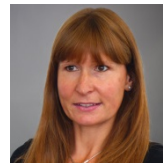
**NEHA SHAH**  
**Legal Director**

0208 780 4175  
[Neha.shah@capsticks.com](mailto:Neha.shah@capsticks.com)



**PETER EDWARDS**  
**Partner**

0208 780 4761  
[Peter.edwards@capsticks.com](mailto:Peter.edwards@capsticks.com)



**LISA GEARY**  
**Partner**

0113 322 5561  
[Lisa.geary@capsticks.com](mailto:Lisa.geary@capsticks.com)



**SAM HOPKINS**  
**Partner**

0208 780 4776  
[Sam.Hopkins@capsticks.com](mailto:Sam.Hopkins@capsticks.com)



**HENRY MATVEIEFF**  
**Partner**

0121 262 6568  
[Henry.matveieff@capsticks.com](mailto:Henry.matveieff@capsticks.com)



**PUJA SOLANKI**  
**Associate**

0208 780 4173  
[Puja.solanki@capsticks.com](mailto:Puja.solanki@capsticks.com)