



Capsticks' Hoarding Project

*Home is where the **HOARD** is*

The aim of this project

Hoarding, also known as 'hoarding disorder' and previously referred to as 'compulsive hoarding', can have a significant impact on the hoarder themselves, neighbours, housing staff and housing providers in a number of different ways.

The aim of this project is to improve your organisation's approach to hoarding. We invite you to join us on this interesting journey of working collaboratively with like-minded organisations, which will empower staff, challenge existing thinking and working practices, and help residents suffering from hoarding disorder.

What does it include?


- The project provides a combination of activities
- Training and coaching for staff members engaged in the project
- Individual and peer support for the hoarders engaged in the project
- Continuous evaluation and communication with staff
- Co-ordination and/or facilitation of statutory and non-statutory agencies
- Project support
- Project analysis and reports of progress and continuous development

How it works

- Workshops
 - Hoarding awareness training
 - Legal approaches workshop
 - Project conclusion workshop

Capsticks

www.capsticks.com

 @capstickslp

Birmingham

35 Newhall Street,
Birmingham B3 3PU
T +44 (0)121 230 1500
F +44 (0)121 230 1515
DX 13003 - Birmingham

Chorley

Ordnance House,
6 East Terrace Business Park,
Euxton Lane,
Chorley PR7 6TB
T +44 (0)125 726 6008

Leeds

Toronto Square, Toronto Street,
Leeds LS1 2HJ
T +44 (0)113 322 5560
F +44 (0)113 242 2722
DX 713112 - Leeds Park Square

London

1 St George's Road,
London SW19 4DR
T +44 (0)20 8780 2211
F +44 (0)20 8780 1141
DX 300118 - Wimbledon Central

Winchester

Staple House, Staple Gardens,
Winchester, SO23 8SR
T +44 (0)1962 678 300
F +44 (0)1962 678 311
DX 2532 - Winchester

- Tailored support
 - Developing a support plan – in their home
 - Acknowledgment
 - Behavioural change ‘supportive intervention’
 - Family support
 - Sympathetic clearances
 - Peer networks
- Legal advice
- Policy and procedure development
- Telephone support

Why should we sign up?

This exclusive package offers a different approach in tackling a long lasting problem that has little research and success in solving. This project will provide positive results for your residents who are suffering with hoarding problems, and your staff who struggle to deal with this complex area of work.

Who leads this project?

Our Head of Housing Advisory Service, Chris Grose, will lead this project alongside our national hoarding specialist Sharon McLoughlin, from Clouds End.

How much does it cost?

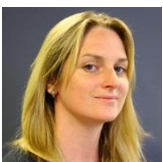
Total cost of **£5,000 plus VAT**

There will be a limited number of places that we can cater for, so to avoid disappointment please do book your place early. We aim to start the project in early 2020 and it will run for 12 months in total.

For more information please contact:




CHRIS GROSE
Head of Housing Advisory Services
 07894 807446
Chris.grose@capsticks.com



JO MCLACHLAN
CBS Co-ordinator
 0113 323 1068
Jo.mclachlan@cbs.capsticks.com

Capsticks

www.capsticks.com

 @capstickslp

Birmingham

35 Newhall Street,
 Birmingham B3 3PU
 T +44 (0)121 230 1500
 F +44 (0)121 230 1515
 DX 13003 - Birmingham

Chorley

Ordnance House,
 6 East Terrace Business Park,
 Euxton Lane,
 Chorley PR7 6TB
 T +44 (0)125 726 6008

Leeds

Toronto Square, Toronto Street,
 Leeds LS1 2HJ
 T +44 (0)113 322 5560
 F +44 (0)113 242 2722
 DX 713112 - Leeds Park Square

London

1 St George's Road,
 London SW19 4DR
 T +44 (0)20 8780 2211
 F +44 (0)20 8780 1141
 DX 300118 - Wimbledon Central

Winchester

Staple House, Staple Gardens,
 Winchester, SO23 8SR
 T +44 (0)1962 678 300
 F +44 (0)1962 678 311
 DX 2532 - Winchester